

WIPO Statistics

PCT Statistical Indicators Report, June 2004

as at 20 July, 2004

Table of Contents

Filing of PCT International Applications

PCT Filing Trends

PCT International Applications by Country of Origin

PCT and Developing Countries

PCT International Applications filed using PCT-EASY and Electronic Filing

PCT International Applications by Language of Filing

Receiving Offices

PCT International Applications by Receiving Office

International Bureau

PCT Record Copies received at the International Bureau

PCT Applications Published

International Search

Distribution of International Search Authorities

Number of International Search Reports Established by Search Authority

International Preliminary Examination

Chapter II Demand Trends

Chapter II Demands by IPEA

Chapter II Demands by Country of Origin

Appendix - List of Codes

WIPO Statistics
Highlights
as at 20 July, 2004

This report contains data on PCT International Applications filed up to the end of June 2004, based on data available to the International Bureau as at 20 July, 2004. As not all PCT applications are available to the International Bureau until several months after filing, data on the last four months are provisional.

Growth Rates:

The growth rate of PCT filing of around 4% continues and appears to be sustained in 2004. This is a slight increase over the yearly growth rate of 2002-2003.

Effect of Rule Changes:

The rule changes which came into force on 1 January 2004 do not seem to have had an effect on the number of PCT International Applications filed.

Electronic Filing:

A strong uptake of the electronic filing service can be seen at the receiving Offices of Japan, Rep. Korea and the International Bureau. Overall, 8% of the International Applications filed so far in 2004 have used the electronic filing service, even though it is not available in many receiving Offices.

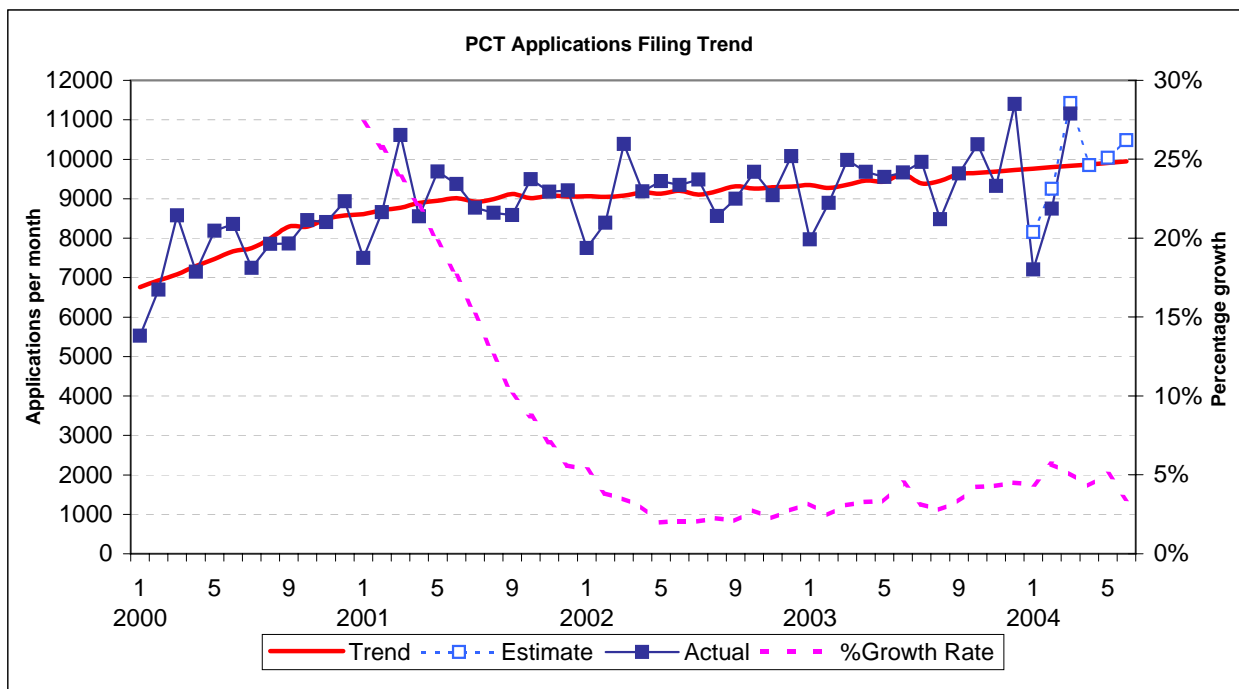
WIPO Statistics
Filing of PCT International Applications
PCT Filing Trends
as at 20 July, 2004

Overall PCT Filing Trends

Explanations and Definitions:

The graph shows the number of applications filed in each month with PCT receiving Offices.

The central trend line is a moving average which shows the overall trend after removing seasonal variations. The dotted line represents the evolution of the yearly percentage growth rate.



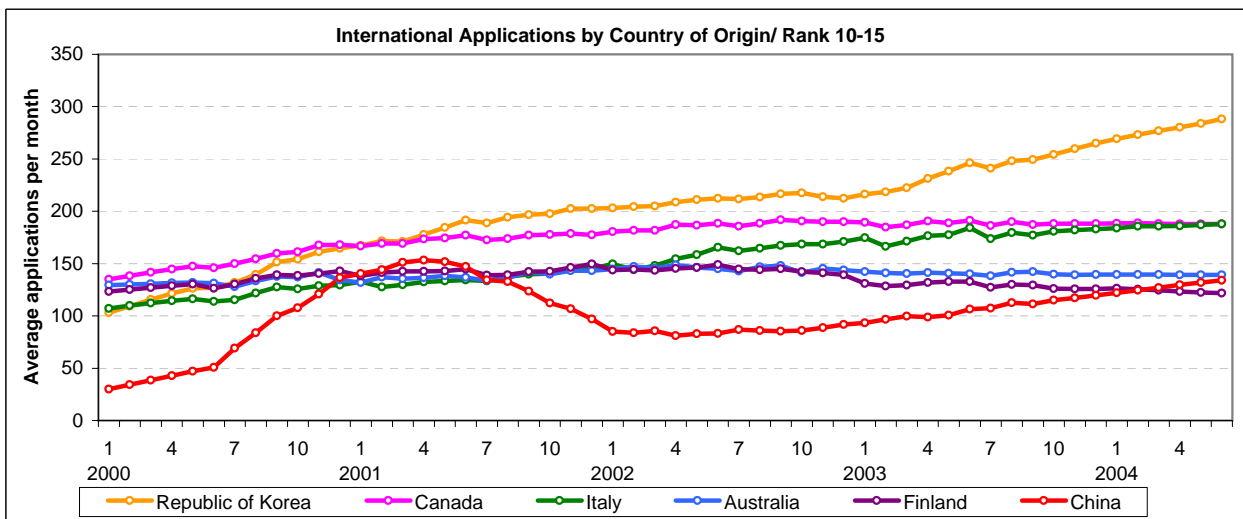
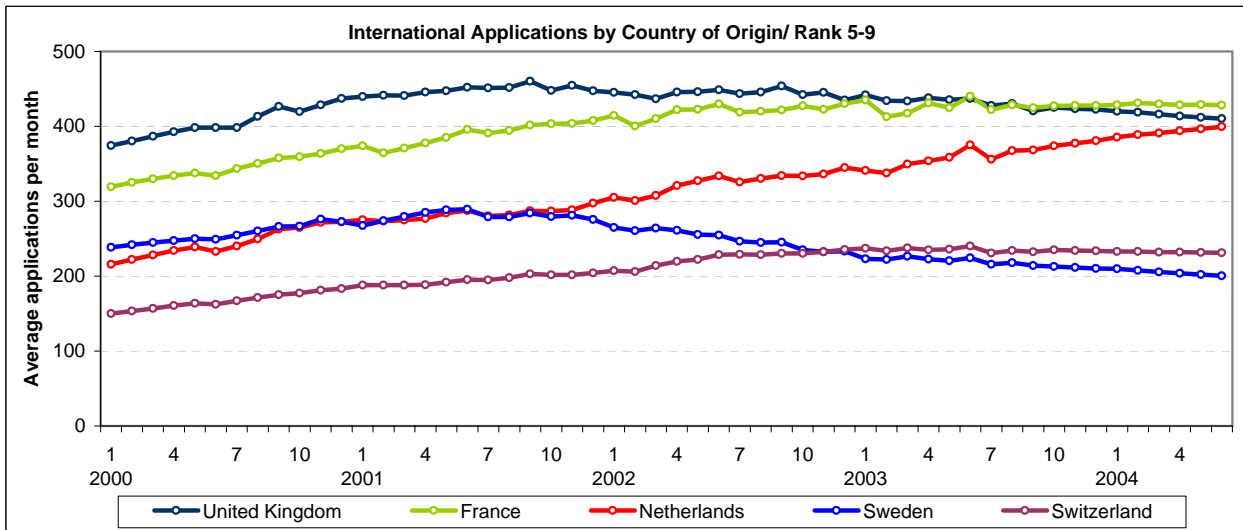
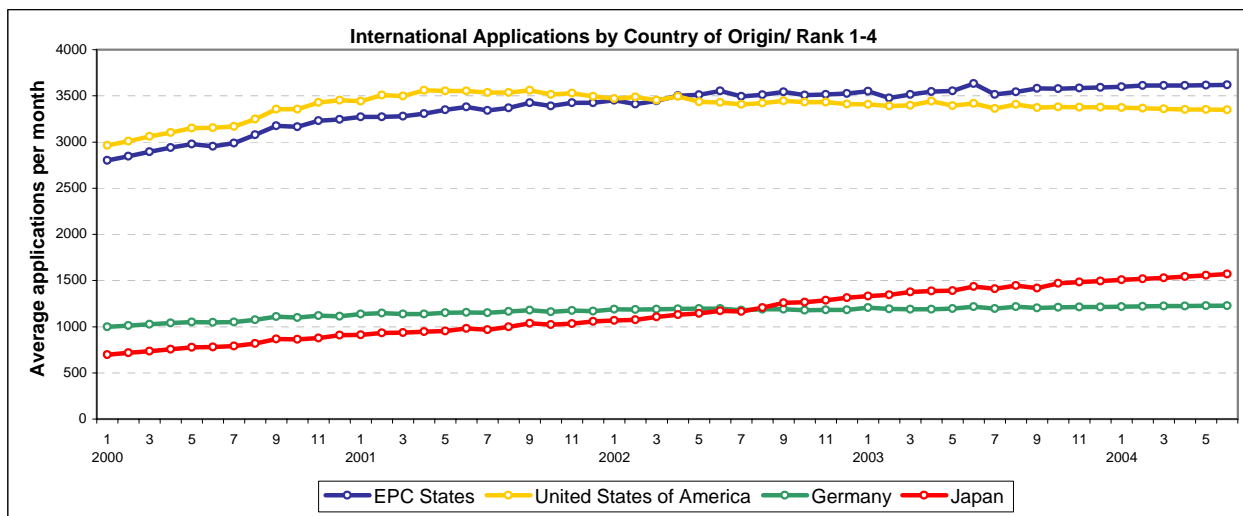
	2000	2001	2002	2003	2004 (to date)	2004 (forecast)
IAs Filed	93,239	108,227	110,387	114,870	44,070	119,600
Growth Rate		16.1%	2.0%	4.1%		4.1%

PCT International Applications by Country of Origin

Explanations and Definitions:

The table and charts show the top 15 countries of origin, defined as the country of residence of the first named PCT applicant.

EPC members states are reported individually and as a group.



PCT International Applications - Top 15 Countries of Origin							
	2000	2001	2002	2003	2003 (percent)	2003 (growth)	2004 (to date)
EPC States	36,003	40,383	42,439	43,113	37.5%	1.6%	17,026
United States of America	38,005	42,891	41,298	40,984	35.7%	-0.8%	12,463
Japan	9,567	11,757	14,061	17,360	15.1%	23.5%	8,703
Germany	12,582	13,932	14,325	14,653	12.8%	2.3%	5,588
United Kingdom	4,795	5,462	5,370	5,215	4.5%	-2.9%	2,363
France	4,138	4,684	5,088	5,167	4.5%	1.6%	1,300
Netherlands	2,928	3,372	3,979	4,430	3.9%	11.3%	1,697
Sweden	3,091	3,412	2,991	2,620	2.3%	-12.4%	1,238
Switzerland	1,989	2,333	2,754	2,831	2.5%	2.8%	1,201
Republic of Korea	1,579	2,305	2,522	2,953	2.6%	17.1%	1,341
Canada	1,801	2,104	2,259	2,271	2.0%	0.5%	857
Italy	1,394	1,603	1,984	2,165	1.9%	9.1%	882
Australia	1,576	1,646	1,761	1,685	1.5%	-4.3%	832
Finland	1,578	1,691	1,761	1,556	1.4%	-11.6%	729
China	784	1,689	1,017	1,288	1.1%	26.6%	632

WIPO Statistics
Filing of PCT International Applications
PCT International Applications by Country of Origin
as at 20 July, 2004

Explanations and Definitions:

PCT applications are counted in the year/month in which they are filed with a PCT receiving Office.
Country of Origin is the residence indicated for the first named applicant.
Codes "--" or "***" or blank are used when origin is unknown or unavailable.
The last four months are provisional and incomplete data.

IA Origin	Year	Month									2004 Total
	2000	2001	2002	2003	2004						
					1	2	3	4	5	6	
--	0	1	4	14	0	0	2	2	0	0	4
**	197	197	221	211	13	28	34	22	16	13	126
AD	1	1	3	4	0	0	0	0	1	0	1
AE	7	9	6	4	1	0	0	0	1	0	2
AG	0	1	0	1	0	0	0	0	0	0	0
AL	0	8	0	0	1	0	0	0	0	0	1
AM	5	15	5	2	0	0	0	0	0	0	0
AN	0	1	1	0	0	0	1	0	0	0	1
AR	9	9	9	15	1	1	1	1	1	1	6
AT	484	618	552	649	52	41	80	50	61	45	329
AU	1,576	1,646	1,761	1,685	114	144	150	146	155	123	832
AZ	2	0	1	3	0	0	0	1	0	0	1
BA	4	7	5	7	0	0	0	2	0	0	2
BB	81	109	123	61	3	1	3	1	1	0	9
BD	0	1	0	2	0	0	0	0	0	0	0
BE	581	685	695	776	42	54	69	67	32	18	282
BG	35	20	31	45	2	0	2	1	1	1	7
BH	2	1	0	3	0	0	0	0	0	0	0
BI	0	2	0	0	0	0	1	0	0	0	1
BJ	0	0	1	0	0	0	0	0	0	0	0
BM	0	1	1	3	2	1	0	1	0	0	4
BN	0	0	1	0	0	0	0	0	0	0	0
BO	0	0	0	0	0	0	0	1	0	0	1
BR	178	171	201	221	6	21	24	18	25	21	115
BS	13	22	17	15	0	2	1	2	1	0	6
BW	1	1	1	1	0	0	0	0	0	0	0
BY	9	23	11	16	3	3	3	6	1	1	17
BZ	1	3	2	2	0	0	0	0	0	0	0
CA	1,801	2,104	2,259	2,271	150	173	178	175	156	25	857
CH	1,989	2,333	2,754	2,831	167	221	272	239	163	139	1,201
CI	1	1	1	1	0	0	0	0	0	0	0
CK	1	1	4	6	2	0	0	0	0	0	2
CL	1	3	6	9	0	0	0	0	1	0	1
CM	2	0	0	2	0	1	0	0	0	0	1
CN	784	1,689	1,017	1,288	108	73	146	151	127	27	632
CO	4	17	36	24	1	1	1	2	2	3	10
CR	7	7	4	6	0	2	0	1	0	0	3
CU	4	14	11	20	1	2	2	2	0	0	7
CY	19	38	23	28	9	1	3	2	2	1	18
CZ	94	80	73	83	5	6	7	7	6	6	37
DE	12,582	13,932	14,325	14,653	872	1,066	1,352	1,161	904	233	5,588
DK	795	917	977	1,028	74	81	99	79	86	89	508
DM	0	1	0	0	0	0	0	0	0	0	0
DO	1	0	0	0	0	0	0	0	0	0	0
DZ	3	6	3	5	1	0	0	0	0	0	1

EC	0	0	2	5	0	0	2	2	0	3	7
EE	6	11	11	8	0	1	0	1	0	1	3
EG	1	1	1	23	2	6	2	9	5	3	27
ES	555	615	720	797	54	72	66	59	77	54	382
ET	0	0	0	1	0	0	0	0	0	0	0
FI	1,578	1,691	1,761	1,556	98	125	160	130	131	85	729
FJ	0	0	1	0	0	0	0	0	0	0	0
FR	4,138	4,684	5,088	5,167	323	350	429	99	71	28	1,300
GB	4,795	5,462	5,370	5,215	347	385	545	430	362	294	2,363
GD	0	0	1	0	0	0	0	0	0	0	0
GE	5	5	9	3	0	0	0	0	0	0	0
GI	0	0	1	0	0	0	0	0	0	0	0
GN	0	1	0	0	0	0	0	0	0	0	0
GR	49	54	75	67	9	6	9	7	10	6	47
GT	0	1	0	0	0	0	0	0	0	0	0
HR	43	55	69	72	0	4	4	5	5	1	19
HT	1	0	0	0	0	0	0	0	0	0	0
HU	135	127	185	115	10	8	12	19	12	1	62
ID	9	6	16	4	0	0	0	0	0	0	0
IE	245	243	307	286	18	17	32	27	23	12	129
IL	964	1,308	1,174	1,128	96	107	103	66	92	88	552
IN	190	295	525	763	49	35	50	48	38	23	243
IR	1	0	0	2	0	0	0	0	0	0	0
IS	24	37	39	59	3	4	1	0	0	4	12
IT	1,394	1,603	1,984	2,165	95	169	211	170	161	76	882
JM	0	0	0	2	0	0	0	0	0	0	0
JO	0	1	2	0	0	0	0	0	0	0	0
JP	9,567	11,757	14,061	17,360	994	1,496	2,343	1,569	1,439	862	8,703
KE	0	0	1	2	2	1	0	1	0	1	5
KG	0	0	0	2	0	0	0	0	0	0	0
KN	1	1	0	1	0	0	0	0	0	0	0
KP	0	0	0	3	0	0	0	0	0	1	1
KR	1,579	2,305	2,522	2,953	181	256	312	272	233	87	1,341
KW	0	0	1	1	0	0	0	0	0	0	0
KY	0	0	0	2	0	0	1	0	0	0	1
KZ	5	9	16	8	1	0	2	0	1	1	5
LB	2	1	0	5	0	0	0	0	0	0	0
LC	0	0	0	1	0	0	0	0	0	0	0
LI	64	47	52	54	3	4	4	5	8	4	28
LK	5	1	3	2	0	0	0	0	0	1	1
LT	1	3	10	4	1	0	0	1	1	0	3
LU	138	125	143	115	11	9	5	12	5	4	46
LV	3	8	10	12	0	2	0	1	0	0	3
MA	1	2	10	7	0	1	0	0	2	0	3
MC	13	9	13	16	2	1	0	2	1	0	6
MD	3	1	1	2	0	0	0	0	1	2	3
MG	0	0	0	0	0	1	0	0	0	0	1
MK	4	3	6	2	0	2	1	0	0	0	3
MT	1	7	6	2	0	0	0	0	1	0	1
MU	5	2	5	3	2	2	0	1	0	0	5
MX	73	104	132	131	4	11	11	7	7	5	45
MY	5	18	18	29	6	1	2	7	4	3	23
NA	0	0	1	0	0	1	0	0	0	0	1
NE	0	0	1	0	0	0	0	0	0	0	0
NI	1	0	0	0	0	0	0	0	0	0	0
NL	2,928	3,372	3,979	4,430	196	279	322	314	368	218	1,697
NO	528	591	550	529	28	37	35	41	28	15	184
NZ	258	288	300	300	15	23	25	22	28	0	113
PA	6	10	7	15	1	3	0	0	0	1	5
PE	3	0	1	2	0	0	0	0	0	0	0
PH	0	9	20	19	0	0	3	0	0	0	3
PK	0	0	0	2	0	0	0	0	0	0	0

PL	109	98	116	155	3	11	9	7	6	2	38
PT	21	42	34	37	0	4	5	2	5	7	23
QA	2	0	0	0	0	0	0	0	0	0	0
RO	24	19	25	14	0	2	3	1	0	0	6
RU	533	555	539	584	22	34	36	39	20	7	158
SA	6	10	10	29	3	1	2	2	0	2	10
SC	1	1	0	3	0	1	2	0	0	0	3
SD	2	4	1	2	0	0	1	0	0	0	1
SE	3,091	3,412	2,991	2,620	188	179	294	218	221	138	1,238
SG	222	283	330	281	25	17	34	40	39	28	183
SI	39	42	44	65	5	9	4	5	3	2	28
SK	31	28	26	27	0	0	4	4	1	0	9
SM	3	2	4	3	0	0	0	0	0	0	0
SN	0	2	0	0	0	0	0	0	0	0	0
SV	2	1	0	0	0	0	0	0	0	0	0
SY	1	1	0	0	0	0	0	0	1	0	1
SZ	0	0	1	0	0	0	0	0	0	0	0
TG	0	0	2	2	0	0	0	0	0	0	0
TH	8	3	9	7	2	1	1	0	1	0	5
TN	1	2	5	5	0	0	1	0	0	0	1
TR	71	76	85	111	6	10	13	5	1	5	40
TT	0	1	1	2	0	0	0	0	0	0	0
TW	0	0	1	0	0	0	0	0	0	0	0
TZ	0	0	1	0	0	0	0	0	0	0	0
UA	40	58	75	58	2	9	7	10	4	7	39
US	38,005	42,891	41,298	40,984	2,733	3,093	3,562	2,232	744	99	12,463
UY	4	4	9	11	0	1	0	0	0	0	1
UZ	2	0	2	0	0	0	0	0	0	0	0
VC	1	0	0	3	0	0	0	0	0	0	0
VE	2	0	1	1	0	0	0	0	0	0	0
VG	0	2	1	0	0	0	1	0	0	0	1
VN	1	0	2	7	0	0	0	0	0	0	0
VU	0	2	0	3	0	0	0	1	0	0	1
YE	2	0	0	0	0	0	0	0	0	0	0
YU	24	33	30	35	1	4	2	0	6	1	14
ZA	387	417	384	358	28	22	49	35	39	21	194
ZM	0	0	1	0	0	0	0	0	0	0	0
ZW	0	3	2	2	1	0	0	1	0	0	2
(blank)	3	667	2	14	1	3	3	2	2	0	11
Grand Total	93,239	108,227	110,387	114,870	7,201	8,743	11,156	8,071	5,950	2,949	44,070

WIPO Statistics
Filing of PCT International Applications
PCT and Developing Countries
as at 20 July, 2004

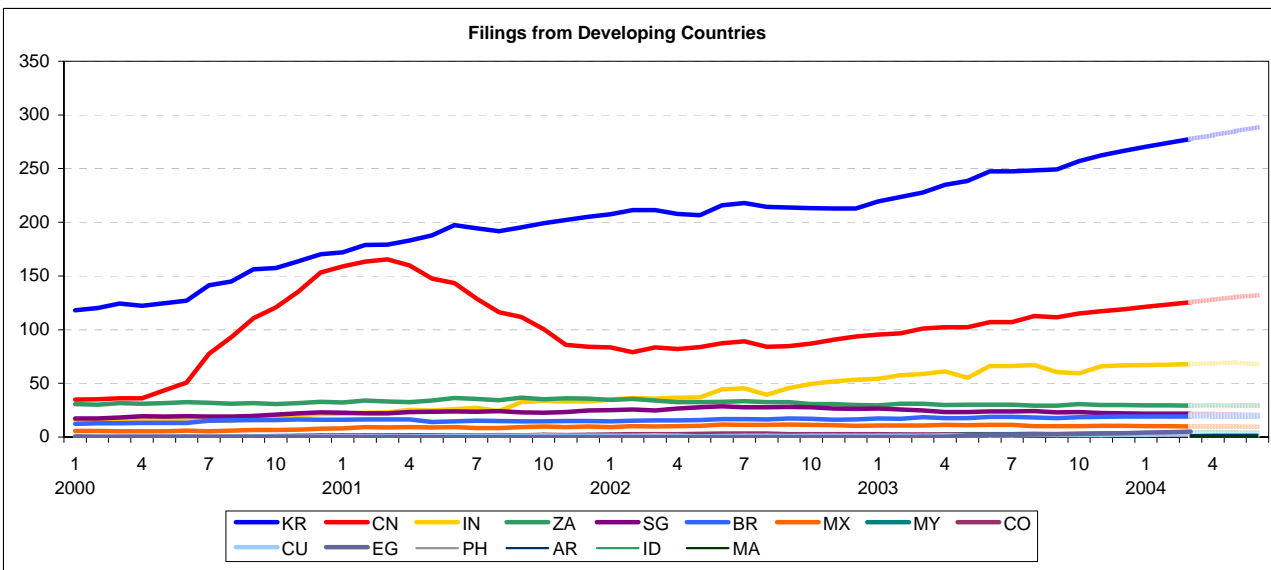
PCT and Developing Countries

Explanations and Definitions:

The graph and table show the number of filings from applicants from 15 developing countries. Applications are counted in the month and year in which they are filed with a receiving Office. The figures for 2004 are for the year to date.

Commentary:

High sustained growth rates are noted in the number of applications filed by applicants from Republic of Korea, China and India.



	2000	2001	2002	2003	2003 (percent)	2003 (growth)	2004 (to date)
KR	1,579	2,305	2,522	2,953	2.57%	17.1%	1,341
CN	784	1,689	1,017	1,288	1.12%	26.6%	632
IN	190	295	525	763	0.66%	45.3%	243
ZA	387	417	384	358	0.31%	-6.8%	194
SG	222	283	330	281	0.24%	-14.8%	183
BR	178	171	201	221	0.19%	10.0%	115
MX	73	104	132	131	0.11%	-0.8%	45
MY	5	18	18	29	0.03%	61.1%	23
CO	4	17	36	24	0.02%	-33.3%	10
CU	4	14	11	20	0.02%	81.8%	7
EG	1	1	1	23	0.02%	2200.0%	27
PH	0	9	20	19	0.02%	-5.0%	3
AR	9	9	9	15	0.01%	66.7%	6
ID	9	6	16	4	0.00%	-75.0%	0
MA	1	2	10	7	0.01%	-30.0%	3

WIPO Statistics
Filing of PCT International Applications
Trends in PCT Easy and Electronic Filing
as at 20 July, 2004

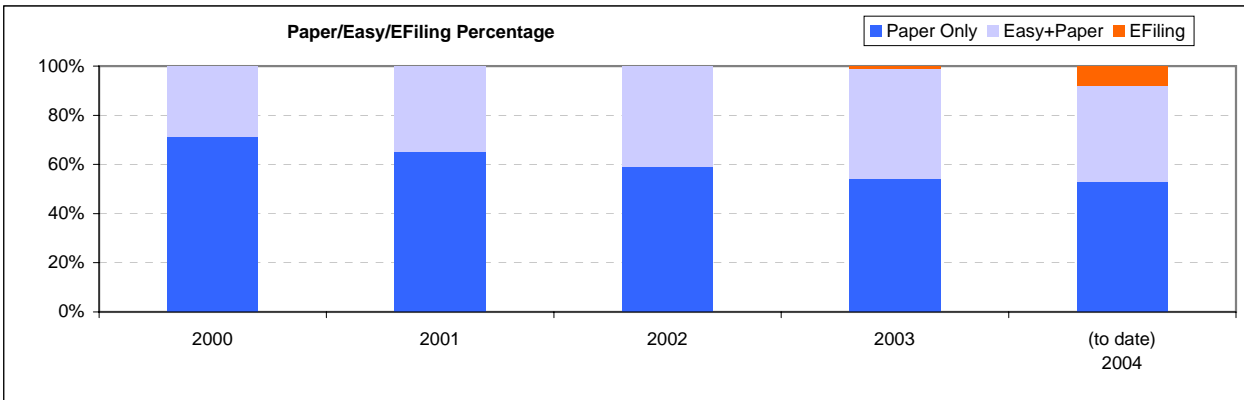
PCT Easy and Electronic Filing

Explanations and Definitions:

The graph shows the percentage of international applications filed using the PCT-EASY software or by electronic filing. The figures for 2004 are for the year to date.

Commentary:

PCT electronic filing is now available at 7 receiving Offices. Japan started most recently in April 2004. We expect strong growth in the number of applications filed electronically and this will be reflected in the 2004 column of the graph each month.



	2000	2001	2002	2003	2004 (to date)
Paper Only	66,473	70,666	65,181	62,312	23,223
Easy+Paper	26,766	37,561	45,203	51,421	17,369
E-Filing	0	0	3	1,137	3,478
%Paper Only	71.3%	65.3%	59.0%	54.2%	52.7%
%Easy+Paper	28.7%	34.7%	40.9%	44.8%	39.4%
%E-Filing	0.0%	0.0%	0.0%	1.0%	7.9%

WIPO Statistics
Filing of PCT International Applications
PCT International Applications filed using PCT-EASY and Electronic Filing
as at 20 July, 2004

Explanations and Definitions:

PCT applications are counted in the year/month in which they are filed with a PCT receiving Office.
 Data for 2004 are provisional year to date figures.

RO	Year		Data		2000				2001				2002				2003				2004			
	Easy	%	E Filing	%	Easy	%	E Filing	%	Easy	%	E Filing	%	Easy	%	E Filing	%	Easy	%	E Filing	%	Easy	%	E Filing	%
AM	3	75.0%	0	0.0%	15	100.0%	0	0.0%	4	100.0%	0	0.0%	3	100.0%	0	0.0%	0	0.0%	0	0.0%	0	0.0%	0	0.0%
AP	0	0.0%	0	0.0%	0	0.0%	0	0.0%	0	0.0%	0	0.0%	0	0.0%	0	0.0%	0	0.0%	0	0.0%	0	0.0%	0	0.0%
AT	12	3.5%	0	0.0%	15	3.8%	0	0.0%	36	9.9%	0	0.0%	57	14.7%	0	0.0%	35	15.6%	0	0.0%	0	0.0%	0	0.0%
AU	964	60.0%	0	0.0%	1,026	61.1%	0	0.0%	1,190	67.5%	0	0.0%	1,130	65.4%	0	0.0%	536	63.3%	0	0.0%	0	0.0%	0	0.0%
AZ	0	0.0%	0	0.0%	0	0.0%	0	0.0%	0	0.0%	0	0.0%	0	0.0%	0	0.0%	0	0.0%	0	0.0%	0	0.0%	0	0.0%
BA	0	0.0%	0	0.0%	2	28.6%	0	0.0%	0	0.0%	0	0.0%	0	0.0%	0	0.0%	0	0.0%	0	0.0%	0	0.0%	0	0.0%
BE	38	24.2%	0	0.0%	50	22.4%	0	0.0%	65	32.2%	0	0.0%	66	28.1%	0	0.0%	23	26.1%	0	0.0%	0	0.0%	0	0.0%
BG	29	96.7%	0	0.0%	19	100.0%	0	0.0%	31	96.9%	0	0.0%	42	93.3%	0	0.0%	8	80.0%	0	0.0%	0	0.0%	0	0.0%
BR	0	0.0%	0	0.0%	0	0.0%	0	0.0%	54	28.0%	0	0.0%	83	40.1%	0	0.0%	41	41.4%	0	0.0%	0	0.0%	0	0.0%
BY	0	0.0%	0	0.0%	0	0.0%	0	0.0%	0	0.0%	0	0.0%	0	0.0%	0	0.0%	0	0.0%	0	0.0%	0	0.0%	0	0.0%
CA	638	40.1%	0	0.0%	826	44.1%	0	0.0%	907	44.9%	0	0.0%	1,035	50.8%	0	0.0%	392	49.9%	0	0.0%	0	0.0%	0	0.0%
CH	124	18.0%	0	0.0%	138	18.5%	0	0.0%	194	26.6%	0	0.0%	282	33.1%	0	0.0%	129	31.6%	0	0.0%	0	0.0%	0	0.0%
CN	146	19.6%	0	0.0%	173	10.4%	0	0.0%	303	31.9%	0	0.0%	468	40.2%	0	0.0%	134	22.8%	0	0.0%	0	0.0%	0	0.0%
CR	0	0.0%	0	0.0%	0	0.0%	0	0.0%	0	0.0%	0	0.0%	0	0.0%	0	0.0%	0	0.0%	0	0.0%	0	0.0%	0	0.0%
CU	0	0.0%	0	0.0%	8	57.1%	0	0.0%	10	90.9%	0	0.0%	20	100.0%	0	0.0%	6	85.7%	0	0.0%	0	0.0%	0	0.0%
CY	0	0.0%	0	0.0%	0	0.0%	0	0.0%	0	0.0%	0	0.0%	0	0.0%	0	0.0%	0	0.0%	0	0.0%	0	0.0%	0	0.0%
CZ	5	5.4%	0	0.0%	16	20.5%	0	0.0%	12	17.1%	0	0.0%	17	21.0%	0	0.0%	3	8.3%	0	0.0%	0	0.0%	0	0.0%
DE	1,666	35.9%	0	0.0%	1,552	31.5%	0	0.0%	1,805	38.1%	0	0.0%	1,730	40.4%	0	0.0%	226	21.9%	1	0.1%	0	0.0%	0	0.0%
DK	176	24.0%	0	0.0%	238	27.9%	0	0.0%	252	28.3%	0	0.0%	227	24.6%	0	0.0%	101	22.0%	0	0.0%	0	0.0%	0	0.0%
DZ	0	0.0%	0	0.0%	0	0.0%	0	0.0%	3	100.0%	0	0.0%	3	100.0%	0	0.0%	1	100.0%	0	0.0%	0	0.0%	0	0.0%
EA	3	37.5%	0	0.0%	3	60.0%	0	0.0%	6	50.0%	0	0.0%	1	25.0%	0	0.0%	0	0.0%	0	0.0%	0	0.0%	0	0.0%
EC	0	0.0%	0	0.0%	0	0.0%	0	0.0%	3	100.0%	0	0.0%	3	60.0%	0	0.0%	2	40.0%	0	0.0%	0	0.0%	0	0.0%
EE	0	0.0%	0	0.0%	6	66.7%	0	0.0%	3	33.3%	0	0.0%	5	71.4%	0	0.0%	1	33.3%	0	0.0%	0	0.0%	0	0.0%
EG	0	0.0%	0	0.0%	0	0.0%	0	0.0%	0	0.0%	0	0.0%	0	0.0%	0	0.0%	0	0.0%	0	0.0%	0	0.0%	0	0.0%
EP	3,576	27.0%	0	0.0%	5,106	33.2%	0	0.0%	4,355	29.4%	3	0.0%	4,879	30.8%	903	5.7%	1,593	24.0%	766	11.5%	0	0.0%	0	0.0%
ES	143	28.9%	0	0.0%	199	39.1%	0	0.0%	242	38.9%	0	0.0%	267	39.9%	0	0.0%	49	15.2%	29	9.0%	0	0.0%	0	0.0%
FI	965	82.8%	0	0.0%	979	84.7%	0	0.0%	890	83.9%	0	0.0%	841	84.4%	0	0.0%	281	63.1%	84	18.9%	0	0.0%	0	0.0%
FR	961	26.8%	0	0.0%	1,136	28.2%	0	0.0%	1,381	32.6%	0	0.0%	1,145	29.6%	216	5.6%	110	14.5%	131	17.3%	0	0.0%	0	0.0%
GB	408	8.1%	0	0.0%	642	11.3%	0	0.0%	998	17.4%	0	0.0%	1,056	19.1%	0	0.0%	394	15.3%	0	0.0%	0	0.0%	0	0.0%
GE	0	0.0%	0	0.0%	1	25.0%	0	0.0%	7	77.8%	0	0.0%	3	100.0%	0	0.0%	0	0.0%	0	0.0%	0	0.0%	0	0.0%
GR	0	0.0%	0	0.0%	2	4.0%	0	0.0%	3	4.3%	0	0.0%	6	10.2%	0	0.0%	5	14.3%	0	0.0%	0	0.0%	0	0.0%
HR	1	2.4%	0	0.0%	10	18.9%	0	0.0%	10	15.2%	0	0.0%	3	4.5%	0	0.0%	0	0.0%	0	0.0%	0	0.0%	0	0.0%
HU	23	17.4%	0	0.0%	26	20.6%	0	0.0%	38	21.3%	0	0.0%	43	39.4%	0	0.0%	13	22.8%	0	0.0%	0	0.0%	0	0.0%
IB	556	26.9%	0	0.0%	1,040	35.8%	0	0.0%	3,610	62.0%	0	0.0%	4,061	62.4%	18	0.3%	989	31.4%	998	31.7%	0	0.0%	0	0.0%
ID	0	0.0%	0	0.0%	0	0.0%	0	0.0%	0	0.0%	0	0.0%	0	0.0%	0	0.0%	0	0.0%	0	0.0%	0	0.0%	0	0.0%

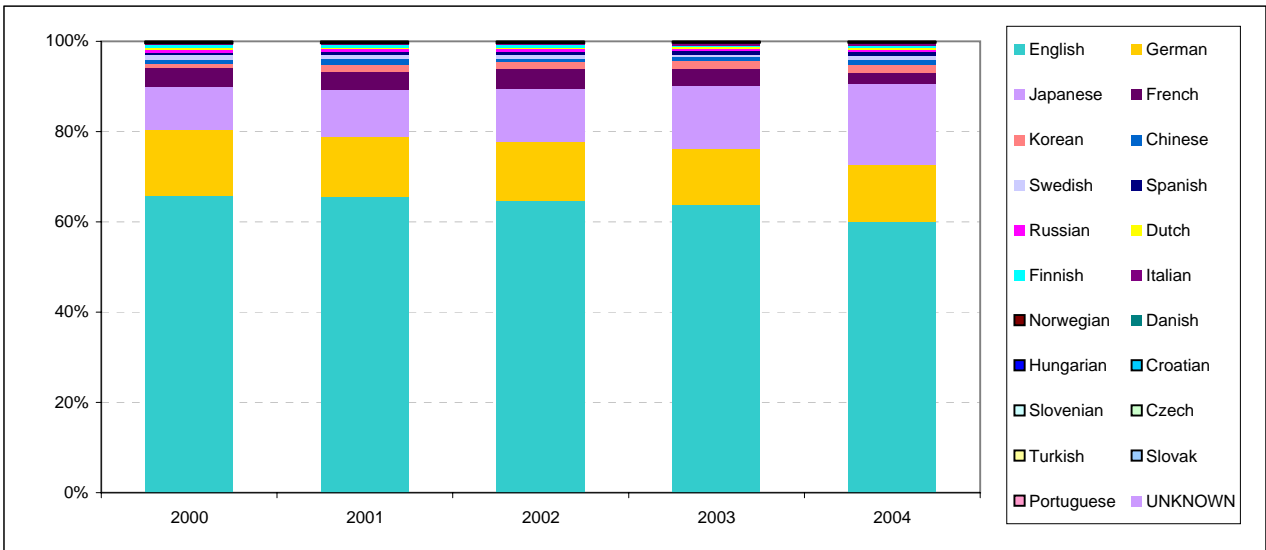
IE	0	0.0%	0	0.0%	0	0.0%	0	0.0%	0	0.0%	0	0.0%	0	0.0%	0	0.0%
IL	572	65.4%	0	0.0%	973	79.6%	0	0.0%	922	86.6%	0	0.0%	994	88.6%	0	0.0%
IN	60	44.4%	0	0.0%	102	44.9%	0	0.0%	70	28.6%	0	0.0%	197	41.6%	0	0.0%
IS	0	0.0%	0	0.0%	0	0.0%	0	0.0%	1	5.0%	0	0.0%	23	63.9%	0	0.0%
IT	0	0.0%	0	0.0%	0	0.0%	0	0.0%	0	0.0%	0	0.0%	0	0.0%	0	0.0%
JP	6,657	70.5%	0	0.0%	8,790	75.2%	0	0.0%	11,101	80.0%	0	0.0%	14,047	82.2%	0	0.0%
KE	0	0.0%	0	0.0%	0	0.0%	0	0.0%	0	0.0%	0	0.0%	0	0.0%	1	33.3%
KG	0	0.0%	0	0.0%	0	0.0%	0	0.0%	0	0.0%	0	0.0%	1	100.0%	0	0.0%
KP	0	0.0%	0	0.0%	0	0.0%	0	0.0%	0	0.0%	0	0.0%	0	0.0%	0	0.0%
KR	923	58.7%	0	0.0%	1,835	79.3%	0	0.0%	2,202	87.7%	0	0.0%	2,524	85.8%	0	0.0%
KZ	0	0.0%	0	0.0%	0	0.0%	0	0.0%	0	0.0%	0	0.0%	0	0.0%	0	0.0%
LT	0	0.0%	0	0.0%	0	0.0%	0	0.0%	4	44.4%	0	0.0%	2	50.0%	0	0.0%
LV	4	100.0%	0	0.0%	8	88.9%	0	0.0%	8	88.9%	0	0.0%	9	90.0%	0	0.0%
MA	0	0.0%	0	0.0%	0	0.0%	0	0.0%	0	0.0%	0	0.0%	0	0.0%	0	0.0%
MC	0	0.0%	0	0.0%	0	0.0%	0	0.0%	0	0.0%	0	0.0%	0	0.0%	0	0.0%
MD	0	0.0%	0	0.0%	0	0.0%	0	0.0%	1	100.0%	0	0.0%	1	50.0%	0	0.0%
MK	0	0.0%	0	0.0%	0	0.0%	0	0.0%	0	0.0%	0	0.0%	0	0.0%	0	0.0%
MX	0	0.0%	0	0.0%	0	0.0%	0	0.0%	11	9.1%	0	0.0%	27	24.1%	0	0.0%
NL	54	5.6%	0	0.0%	77	8.1%	0	0.0%	156	17.8%	0	0.0%	312	32.8%	0	0.0%
NO	183	40.8%	0	0.0%	268	52.4%	0	0.0%	252	51.0%	0	0.0%	264	60.4%	0	0.0%
NZ	0	0.0%	0	0.0%	60	20.3%	0	0.0%	177	60.6%	0	0.0%	199	67.5%	0	0.0%
OA	0	0.0%	0	0.0%	0	0.0%	0	0.0%	0	0.0%	0	0.0%	0	0.0%	0	0.0%
PH	0	0.0%	0	0.0%	0	0.0%	0	0.0%	4	19.0%	0	0.0%	1	6.7%	0	0.0%
PL	0	0.0%	0	0.0%	0	0.0%	0	0.0%	0	0.0%	0	0.0%	0	0.0%	0	0.0%
PT	4	30.8%	0	0.0%	7	23.3%	0	0.0%	8	40.0%	0	0.0%	7	38.9%	0	0.0%
RO	1	3.8%	0	0.0%	0	0.0%	0	0.0%	0	0.0%	0	0.0%	0	0.0%	0	0.0%
RU	38	6.9%	0	0.0%	54	9.3%	0	0.0%	52	9.2%	0	0.0%	82	14.0%	0	0.0%
SD	0	0.0%	0	0.0%	0	0.0%	0	0.0%	0	0.0%	0	0.0%	0	0.0%	0	0.0%
SE	428	15.9%	0	0.0%	560	19.2%	0	0.0%	856	34.9%	0	0.0%	855	40.8%	0	0.0%
SG	32	15.7%	0	0.0%	41	15.5%	0	0.0%	66	21.8%	0	0.0%	85	28.8%	0	0.0%
SI	20	64.5%	0	0.0%	24	63.2%	0	0.0%	13	44.8%	0	0.0%	28	58.3%	0	0.0%
SK	3	11.1%	0	0.0%	4	16.0%	0	0.0%	7	30.4%	0	0.0%	8	34.8%	0	0.0%
SY	0	0.0%	0	0.0%	0	0.0%	0	0.0%	0	0.0%	0	0.0%	0	0.0%	0	0.0%
TN	0	0.0%	0	0.0%	0	0.0%	0	0.0%	0	0.0%	0	0.0%	0	0.0%	0	0.0%
TR	48	70.6%	0	0.0%	56	82.4%	0	0.0%	62	79.5%	0	0.0%	78	71.6%	0	0.0%
TT	0	0.0%	0	0.0%	1	100.0%	0	0.0%	0	0.0%	0	0.0%	0	0.0%	0	0.0%
UA	0	0.0%	0	0.0%	0	0.0%	0	0.0%	1	1.7%	0	0.0%	0	0.0%	0	0.0%
US	7,207	18.9%	0	0.0%	11,351	26.3%	0	0.0%	12,714	30.8%	0	0.0%	14,104	34.4%	0	0.0%
UZ	2	100.0%	0	0.0%	0	0.0%	0	0.0%	1	50.0%	0	0.0%	0	0.0%	0	0.0%
VN	0	0.0%	0	0.0%	0	0.0%	0	0.0%	0	0.0%	0	0.0%	0	0.0%	0	0.0%
YU	18	75.0%	0	0.0%	8	25.0%	0	0.0%	5	17.2%	0	0.0%	10	30.3%	0	0.0%
ZA	75	34.7%	0	0.0%	114	61.3%	0	0.0%	97	51.6%	0	0.0%	87	48.9%	0	0.0%

WIPO Statistics
Filing of PCT International Applications
PCT International Applications by Language of Filing
as at 20 July, 2004

Explanations and Definitions:

PCT applications are counted in the year/month in which they are filed with a PCT receiving Office.

Data for 2004 are provisional year to date figures.



Number of IAs	Year				
Language	2000	2001	2002	2003	2004
English	61,402	70,942	71,270	73,145	26,468
German	13,502	14,515	14,607	14,476	5,538
Japanese	8,962	11,019	13,006	15,867	7,923
French	3,986	4,518	4,801	4,527	1,044
Korean	866	1,473	1,671	1,766	819
Chinese	696	1,587	846	1,036	510
Swedish	963	1,021	891	706	337
Spanish	567	633	797	849	392
Russian	543	581	596	596	204
Dutch	516	503	440	513	229
Finnish	524	539	517	404	154
Italian	271	386	464	579	299
Norwegian	247	266	233	184	58
Danish	146	161	161	134	72
Hungarian	13	23	34	17	3
Croatian	9	21	19	11	2
Slovenian	10	12	11	13	9
Czech	11	15	14	10	3
Turkish	0	0	3	17	4
Slovak	2	7	5	8	1
Portuguese	0	1	1	8	1
UNKNOWN	3	4	0	2	0
Greek	0	0	0	2	0

WIPO Statistics
Receiving Offices
PCT International Applications by Receiving Office
as at 20 July, 2004

Explanations and Definitions:

PCT applications are counted in the year/month in which they are filed with a PCT receiving Office.
The last four months are provisional and incomplete data.

IA	Year	Month						2004 Total			
	2000	2001	2002	2003	2004						
RO					1	2	3	4	5	6	
AE	0	0	0	0	0	0	0	0	0	0	0
AG	0	0	0	0	0	0	0	0	0	0	0
AL	0	0	0	0	0	0	0	0	0	0	0
AM	4	15	4	3	0	0	0	0	0	0	0
AP	0	2	2	0	1	0	0	0	0	0	1
AT	347	396	364	387	35	26	53	32	42	36	224
AU	1,608	1,678	1,763	1,727	113	145	154	154	157	124	847
AZ	1	0	1	3	0	0	0	1	0	0	1
BA	4	7	4	7	0	0	0	2	0	0	2
BB	0	0	0	0	0	0	0	0	0	0	0
BE	157	223	202	235	17	11	18	15	18	9	88
BF	0	0	0	0	0	0	0	0	0	0	0
BG	30	19	32	45	2	0	4	2	1	1	10
BJ	0	0	0	0	0	0	0	0	0	0	0
BR	160	161	193	207	5	19	18	14	23	20	99
BW	0	0	0	0	0	0	0	0	0	0	0
BY	6	17	5	15	3	3	3	6	1	1	17
BZ	0	0	0	0	0	0	0	0	0	0	0
CA	1,590	1,872	2,020	2,036	138	159	152	173	146	18	786
CF	0	0	0	0	0	0	0	0	0	0	0
CG	0	0	0	0	0	0	0	0	0	0	0
CH	690	744	728	852	51	54	92	68	60	83	408
CI	0	0	0	0	0	0	0	0	0	0	0
CM	0	0	0	0	0	0	0	0	0	0	0
CN	745	1,656	951	1,165	88	66	146	143	120	24	587
CO	0	0	0	0	0	0	0	0	0	0	0
CR	6	5	7	5	0	2	0	0	0	0	2
CS	0	0	0	0	0	0	0	0	0	0	0
CU	4	14	11	20	1	2	2	2	0	0	7
CY	4	3	2	5	1	0	0	0	0	0	1
CZ	92	78	70	81	5	6	7	7	5	6	36
DE	4,647	4,934	4,738	4,282	158	228	292	235	103	14	1,030
DK	732	853	892	922	66	68	84	75	78	88	459
DM	0	0	0	0	0	0	0	0	0	0	0
DZ	2	6	3	3	1	0	0	0	0	0	1
EA	8	5	12	4	2	0	0	0	0	0	2
EC	0	0	3	5	0	0	2	1	0	2	5
EE	5	9	9	7	0	1	0	1	0	1	3
EG	0	0	0	17	2	6	2	9	4	2	25
EP	13,245	15,358	14,816	15,853	981	1,281	1,563	1,392	1,139	291	6,647
ES	494	509	622	669	43	59	55	51	62	52	322
FI	1,165	1,156	1,061	997	58	70	100	89	85	43	445
FR	3,588	4,022	4,237	3,868	236	252	271	0	0	0	759
GA	0	0	0	0	0	0	0	0	0	0	0
GB	5,008	5,657	5,741	5,533	375	427	572	474	391	332	2,571
GD	0	0	0	0	0	0	0	0	0	0	0
GE	5	4	9	3	0	0	0	0	0	0	0
GH	0	0	0	0	0	0	0	0	0	0	0
GM	0	0	0	0	0	0	0	0	0	0	0
GN	0	0	0	0	0	0	0	0	0	0	0
GQ	0	0	0	0	0	0	0	0	0	0	0
GR	42	50	70	59	7	5	6	7	6	4	35
GW	0	0	0	0	0	0	0	0	0	0	0
HK	0	0	0	0	0	0	0	0	0	0	0
HR	42	53	66	67	0	4	4	4	3	1	16
HU	132	126	178	109	10	8	8	18	12	1	57
IB	2,069	2,904	5,825	6,509	396	436	653	537	618	507	3,147
ID	1	4	6	1	0	0	0	0	0	0	0
IE	165	158	171	168	16	13	21	10	18	11	89
IL	874	1,222	1,065	1,122	94	103	101	66	97	95	556
IN	135	227	245	473	32	14	28	23	13	5	115
IS	13	23	20	36	0	3	1	0	0	2	6
IT	556	662	831	850	33	61	73	70	62	17	316

JP	9,447	11,687	13,880	17,096	980	1,478	2,302	1,558	1,434	864	8,616
KE	0	0	0	1	0	1	0	1	0	1	3
KG	0	0	0	1	0	0	0	0	0	0	0
KP	0	0	0	0	0	0	0	0	0	1	1
KR	1,573	2,314	2,511	2,942	182	257	315	270	232	85	1,341
KZ	5	8	16	8	0	0	2	0	1	0	3
LC	0	0	0	0	0	0	0	0	0	0	0
LI	0	0	0	0	0	0	0	0	0	0	0
LK	0	0	0	0	0	0	0	0	0	0	0
LR	0	0	0	0	0	0	0	0	0	0	0
LS	0	0	0	0	0	0	0	0	0	0	0
LT	1	3	9	4	0	0	0	1	1	0	2
LU	0	0	0	0	0	0	0	0	0	0	0
LV	4	9	9	10	0	2	0	1	0	0	3
MA	0	0	6	5	0	1	0	0	2	0	3
MC	1	0	0	2	0	0	0	0	1	0	1
MD	2	0	1	2	0	0	0	0	0	2	2
MG	0	0	0	0	0	0	0	0	0	0	0
MK	3	3	6	2	0	2	0	0	0	0	2
ML	0	0	0	0	0	0	0	0	0	0	0
MN	0	0	0	0	0	0	0	0	0	0	0
MR	0	0	0	0	0	0	0	0	0	0	0
MW	0	0	0	0	0	0	0	0	0	0	0
MX	57	92	121	112	3	9	11	7	6	3	39
MZ	0	0	0	0	0	0	0	0	0	0	0
NA	0	0	0	0	0	0	0	0	0	0	0
NE	0	0	0	0	0	0	0	0	0	0	0
NI	0	0	0	0	0	0	0	0	0	0	0
NL	965	945	875	950	70	80	68	71	82	3	374
NO	449	511	494	437	26	30	31	32	26	11	156
NZ	262	295	292	295	17	21	23	23	30	0	114
OA	0	0	0	2	0	1	0	0	0	0	1
OM	0	0	0	0	0	0	0	0	0	0	0
PG	0	0	0	0	0	0	0	0	0	0	0
PH	0	7	21	15	0	0	3	0	0	0	3
PL	106	98	107	151	3	12	10	7	7	2	41
PT	13	30	20	18	0	3	2	2	2	7	16
RO	26	22	24	11	0	2	2	1	0	0	5
RU	549	578	568	586	21	35	38	38	20	8	160
SC	0	0	0	0	0	0	0	0	0	0	0
SD	4	4	1	2	0	0	1	0	0	0	1
SE	2,691	2,915	2,455	2,097	127	141	230	171	165	119	953
SG	204	264	303	295	29	15	34	38	44	29	189
SI	31	38	29	48	4	7	4	4	2	2	23
SK	27	25	23	23	0	0	3	2	1	0	6
SL	0	0	0	0	0	0	0	0	0	0	0
SN	0	0	0	0	0	0	0	0	0	0	0
SU	0	0	0	0	0	0	0	0	0	0	0
SY	0	0	0	0	0	0	0	0	1	0	1
SZ	0	0	0	0	0	0	0	0	0	0	0
TD	0	0	0	0	0	0	0	0	0	0	0
TG	0	0	0	0	0	0	0	0	0	0	0
TJ	0	0	0	0	0	0	0	0	0	0	0
TM	0	0	0	0	0	0	0	0	0	0	0
TN	0	0	1	2	0	0	0	0	0	0	0
TR	68	68	78	109	3	9	7	4	1	0	24
TT	0	1	1	1	0	0	0	0	0	0	0
TZ	0	0	0	0	0	0	0	0	0	0	0
UA	40	48	58	56	3	10	6	10	5	7	41
UG	0	0	0	0	0	0	0	0	0	0	0
US	38,092	43,212	41,278	41,019	2,750	3,085	3,561	2,139	611	11	12,157
UZ	2	0	2	0	0	0	0	0	0	0	0
VC	0	0	0	0	0	0	0	0	0	0	0
VN	1	0	2	7	0	0	0	0	0	0	0
WO	0	0	0	0	0	0	0	0	0	0	0
YU	24	32	29	33	1	4	2	0	6	1	14
ZA	216	186	188	178	12	6	16	10	6	3	53
ZM	0	0	0	0	0	0	0	0	0	0	0
ZW	0	0	0	0	0	0	0	0	0	0	0
Grand Total	93,239	108,227	110,387	114,870	7,201	8,743	11,156	8,071	5,950	2,949	44,070

WIPO Statistics
International Bureau
Record Copy Trends
as at 20 July, 2004

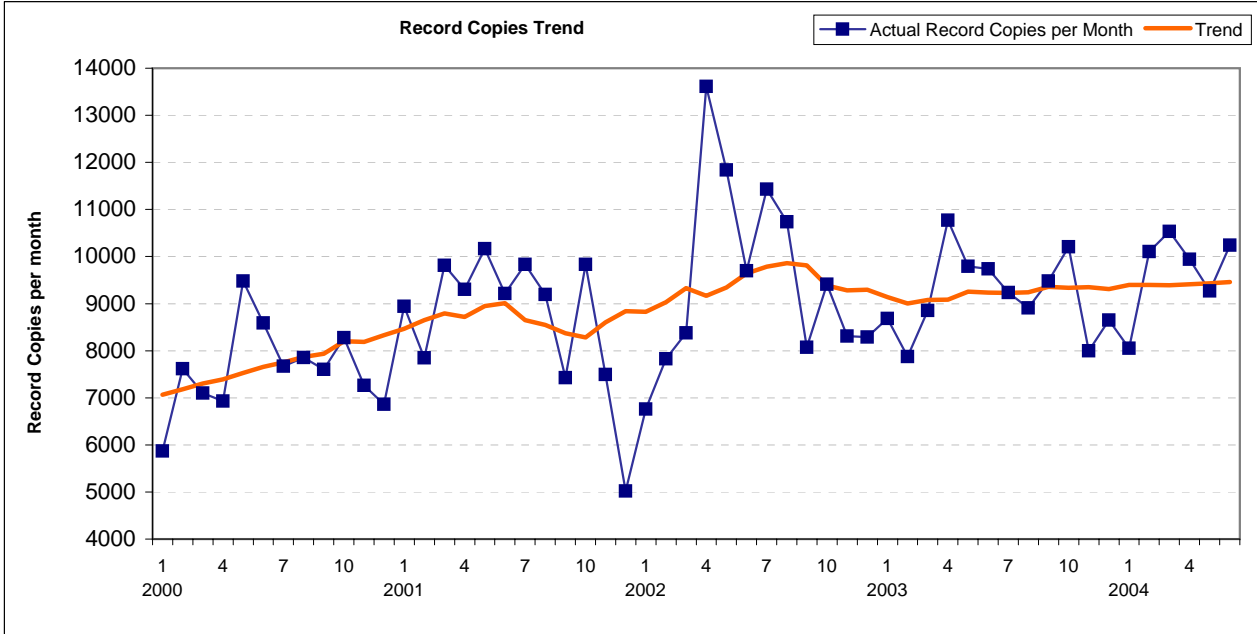
Record Copy Trends

Explanations and Definitions:

The graph shows the number of record copies received at the International Bureau each month. The central trend line is a moving average which shows the overall trend after removing seasonal variations.

Record Copy Processing Times:

Because record copies are only received at the International Bureau after processing at a receiving Office, the figures for each month are strongly influenced by processing times at the receiving Offices. For this reason, trends in the receipt of record copies are not always reliable indicators of demand for PCT.



	2000	2001	2002	2003	2004 (forecast)	2004 (to date)
Record Copies	91,114	104,096	114,365	110,193	119,800	58,146
Growth Rate		14.2%	9.9%	-3.6%	8.7%	

WIPO Statistics
International Bureau
PCT Record Copies received at the International Bureau
as at 20 July, 2004

Explanations and Definitions:
PCT applications are counted in the year/month in which they are received at the International Bureau. The last 1 month's data provisional and earlier months may change as applications are processed at the International Bureau.

IA	Year		Month		2004						2004 Total	Percentage
	2000	2001	2002	2003	1	2	3	4	5	6	2003	
RO												
AE	0	0	0	0	0	0	0	0	0	0	0	0.0%
AG	0	0	0	0	0	0	0	0	0	0	0	0.0%
AL	0	0	0	0	0	0	0	0	0	0	0	0.0%
AM	5	15	4	3	0	0	0	0	0	0	0	0.0%
AP	1	1	3	0	0	0	0	0	1	0	1	0.0%
AT	332	415	355	378	45	28	61	24	39	37	234	0.3%
AU	1,609	1,736	1,753	1,713	128	98	169	177	142	168	882	1.6%
AZ	2	1	1	1	1	0	0	0	2	0	3	0.0%
BA	4	4	7	6	1	0	0	1	1	0	3	0.0%
BB	0	0	0	0	0	0	0	0	0	0	0	0.0%
BE	151	216	200	226	28	19	19	14	12	20	112	0.2%
BF	0	0	0	0	0	0	0	0	0	0	0	0.0%
BG	29	21	30	44	1	4	0	4	0	3	12	0.0%
BJ	0	0	0	0	0	0	0	0	0	0	0	0.0%
BR	139	182	195	209	14	5	19	22	17	27	104	0.2%
BW	0	0	0	0	0	0	0	0	0	0	0	0.0%
BY	7	16	5	16	0	5	2	5	4	2	18	0.0%
BZ	0	0	0	0	0	0	0	0	0	0	0	0.0%
CA	1,477	1,884	2,065	1,952	159	161	165	173	167	135	960	1.8%
CF	0	0	0	0	0	0	0	0	0	0	0	0.0%
CG	0	0	0	0	0	0	0	0	0	0	0	0.0%
CH	685	751	732	855	36	57	93	57	66	77	386	0.8%
CI	0	0	0	0	0	0	0	0	0	0	0	0.0%
CM	0	0	0	0	0	0	0	0	0	0	0	0.0%
CN	554	1,643	1,088	1,136	102	104	90	131	76	177	680	1.0%
CO	0	0	0	0	0	0	0	0	0	0	0	0.0%
CR	7	4	6	4	0	0	0	4	1	0	5	0.0%
CS	0	0	0	0	0	0	0	0	0	0	0	0.0%
CU	5	9	13	18	5	0	4	1	0	2	12	0.0%
CY	4	3	2	4	0	0	2	0	0	0	2	0.0%
CZ	91	77	71	75	9	6	6	7	9	6	43	0.1%
DE	4,327	5,084	5,062	4,211	281	349	196	276	273	296	1,671	3.8%
DK	722	850	884	903	107	83	69	94	58	85	496	0.8%
DM	0	0	0	0	0	0	0	0	0	0	0	0.0%
DZ	3	4	3	4	0	1	0	0	0	0	1	0.0%
EA	7	5	12	5	0	2	0	0	0	0	2	0.0%
EC	0	0	3	5	0	0	0	0	3	2	5	0.0%
EE	5	8	10	7	0	0	1	0	1	1	3	0.0%
EG	0	0	0	11	8	2	6	2	8	5	31	0.0%
EP	12,683	14,518	15,937	14,747	991	2,070	1,773	1,254	1,257	1,734	9,079	13.4%
ES	477	502	620	666	21	73	83	50	48	82	357	0.6%
FI	1,114	1,173	1,089	1,031	64	62	106	65	46	132	475	0.9%
FR	3,199	4,046	3,935	3,757	340	285	320	228	168	242	1,583	3.4%
GA	0	0	0	0	0	0	0	0	0	0	0	0.0%
GB	5,029	5,666	5,564	5,444	524	481	554	427	473	525	2,984	4.9%
GD	0	0	0	0	0	0	0	0	0	0	0	0.0%
GE	4	5	8	4	0	0	0	0	0	0	0	0.0%
GH	0	0	0	0	0	0	0	0	0	0	0	0.0%
GM	0	0	0	0	0	0	0	0	0	0	0	0.0%
GN	0	0	0	0	0	0	0	0	0	0	0	0.0%
GQ	0	0	0	0	0	0	0	0	0	0	0	0.0%
GR	43	48	69	63	4	4	8	9	2	6	33	0.1%
GW	0	0	0	0	0	0	0	0	0	0	0	0.0%
HK	0	0	0	0	0	0	0	0	0	0	0	0.0%
HR	49	53	62	69	3	0	7	3	5	1	19	0.1%
HU	138	127	145	139	8	5	10	11	12	17	63	0.1%
IB	1,977	2,675	5,912	6,308	468	415	708	574	586	777	3,528	5.7%
ID	4	4	6	1	0	0	0	0	0	0	0	0.0%
IE	155	176	174	155	18	21	11	23	15	13	101	0.1%
IL	869	1,141	1,111	1,116	125	90	107	69	80	110	581	1.0%
IN	117	263	233	386	51	17	64	15	40	35	222	0.4%
IS	13	23	20	36	0	2	2	0	0	2	6	0.0%
IT	533	628	864	753	92	43	72	62	84	75	428	0.7%

JP	9,349	11,777	13,515	16,694	1,340	1,437	1,613	2,230	1,338	1,712	9,670	15.1%
KE	0	0	0	0	1	0	0	1	0	2	4	0.0%
KG	0	0	0	1	0	0	0	0	0	0	0	0.0%
KP	0	0	0	0	0	0	0	0	0	0	0	0.0%
KR	1,511	2,313	2,548	2,935	180	237	285	282	236	232	1,452	2.7%
KZ	5	6	14	9	3	0	0	2	0	0	5	0.0%
LC	0	0	0	0	0	0	0	0	0	0	0	0.0%
LI	0	0	0	0	0	0	0	0	0	0	0	0.0%
LK	0	0	0	0	0	0	0	0	0	0	0	0.0%
LR	0	0	0	0	0	0	0	0	0	0	0	0.0%
LS	0	0	0	0	0	0	0	0	0	0	0	0.0%
LT	1	2	7	5	0	2	0	0	1	0	3	0.0%
LU	0	0	0	0	0	0	0	0	0	0	0	0.0%
LV	4	9	8	9	2	0	2	0	0	1	5	0.0%
MA	0	0	6	5	0	0	1	0	0	0	1	0.0%
MC	1	0	0	2	0	0	0	0	0	1	1	0.0%
MD	2	0	1	2	0	0	0	0	0	2	2	0.0%
MG	0	0	0	0	0	0	0	0	0	0	0	0.0%
MK	3	3	6	2	0	1	1	0	0	0	2	0.0%
ML	0	0	0	0	0	0	0	0	0	0	0	0.0%
MN	0	0	0	0	0	0	0	0	0	0	0	0.0%
MR	0	0	0	0	0	0	0	0	0	0	0	0.0%
MW	0	0	0	0	0	0	0	0	0	0	0	0.0%
MX	58	94	116	115	3	5	13	8	8	5	42	0.1%
MZ	0	0	0	0	0	0	0	0	0	0	0	0.0%
NA	0	0	0	0	0	0	0	0	0	0	0	0.0%
NE	0	0	0	0	0	0	0	0	0	0	0	0.0%
NI	0	0	0	0	0	0	0	0	0	0	0	0.0%
NL	883	964	888	955	89	87	91	27	82	56	432	0.9%
NO	448	504	497	420	34	30	45	34	28	34	205	0.4%
NZ	261	277	298	290	33	17	21	23	23	30	147	0.3%
OA	0	0	0	2	0	0	0	0	1	0	1	0.0%
OM	0	0	0	0	0	0	0	0	0	0	0	0.0%
PG	0	0	0	0	0	0	0	0	0	0	0	0.0%
PH	0	3	25	11	4	0	0	2	1	0	7	0.0%
PL	100	105	99	138	19	6	10	13	8	7	63	0.1%
PT	12	28	20	19	0	3	1	3	1	7	15	0.0%
RO	26	28	13	22	0	0	1	0	0	5	6	0.0%
RU	580	520	596	508	52	49	44	66	9	71	291	0.5%
SC	0	0	0	0	0	0	0	0	0	0	0	0.0%
SD	5	4	1	2	0	0	0	1	0	0	1	0.0%
SE	2,722	3,102	2,463	2,089	179	161	211	182	140	226	1,099	1.9%
SG	213	258	305	306	20	26	31	26	49	43	195	0.3%
SI	30	39	31	49	0	8	7	4	2	2	23	0.0%
SK	26	27	22	23	1	0	2	2	1	1	7	0.0%
SL	0	0	0	0	0	0	0	0	0	0	0	0.0%
SN	0	0	0	0	0	0	0	0	0	0	0	0.0%
SU	0	0	0	0	0	0	0	0	0	0	0	0.0%
SY	0	0	0	0	0	0	0	0	0	1	1	0.0%
SZ	0	0	0	0	0	0	0	0	0	0	0	0.0%
TD	0	0	0	0	0	0	0	0	0	0	0	0.0%
TG	0	0	0	0	0	0	0	0	0	0	0	0.0%
TJ	0	0	0	0	0	0	0	0	0	0	0	0.0%
TM	0	0	0	0	0	0	0	0	0	0	0	0.0%
TN	0	0	1	1	1	0	0	0	0	0	1	0.0%
TR	67	68	76	96	3	13	10	9	3	8	46	0.1%
TT	0	1	0	1	1	0	0	0	0	0	1	0.0%
TZ	0	0	0	0	0	0	0	0	0	0	0	0.0%
UA	44	46	57	69	1	7	7	4	12	7	38	0.1%
UG	0	0	0	0	0	0	0	0	0	0	0	0.0%
US	37,968	39,733	44,277	38,717	2,435	3,506	3,395	3,231	3,616	2,987	19,170	35.1%
UZ	2	0	2	0	0	0	0	0	0	0	0	0.0%
VC	0	0	0	0	0	0	0	0	0	0	0	0.0%
VN	1	0	2	6	1	0	0	0	0	0	1	0.0%
WO	0	0	0	0	0	0	0	0	0	0	0	0.0%
YU	22	31	30	34	0	0	7	0	0	8	15	0.0%
ZA	200	177	188	195	18	16	9	10	16	0	69	0.2%
ZM	0	0	0	0	0	0	0	0	0	0	0	0.0%
ZW	0	0	0	0	0	0	0	0	0	0	0	0.0%
Grand Total	91,114	104,096	114,365	110,193	8,054	10,103	10,534	9,942	9,271	10,242	58,146	100.0%

WIPO Statistics
International Bureau
PCT Applications Published
as at 20 July, 2004

Explanations and Definitions:

Publications and republications are counted on the date on which the publication or republication occurs. This may cause distortions in the trends when backlogs at the International Bureau are cleared.

Publications and Republications:

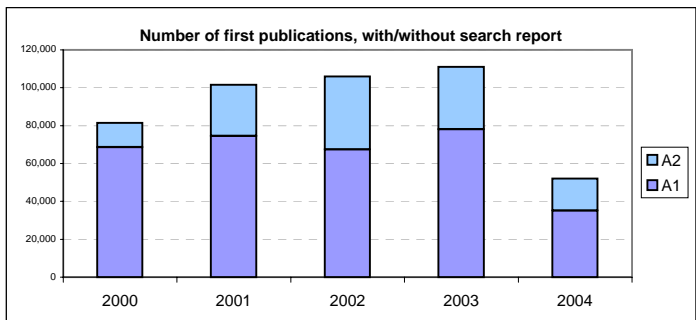
The number of publications by kind code shows the total number of PCT applications published, broken down by those that are published with and without the search report. Publication without the search report is usually a consequence of late establishment of search report by the ISA. The number of republications shows a strong increase from 2002. This is due to an increase in the number of late search reports, but also due to clearing of a backlog at the IB.

2004 figures are year to date.

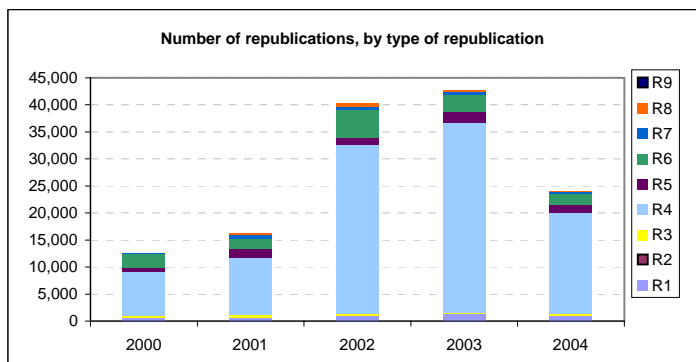
Sum of FirstPub	Year				
Kindcode	2000	2001	2002	2003	2004
A1	68,642	74,451	67,368	78,139	35,222
A2	12,894	27,081	38,563	32,929	16,911
Grand Total	81,536	101,532	105,931	111,068	52,133

Kind Codes:

A1 - Published with International Search Report
A2 - Published without International Search Report



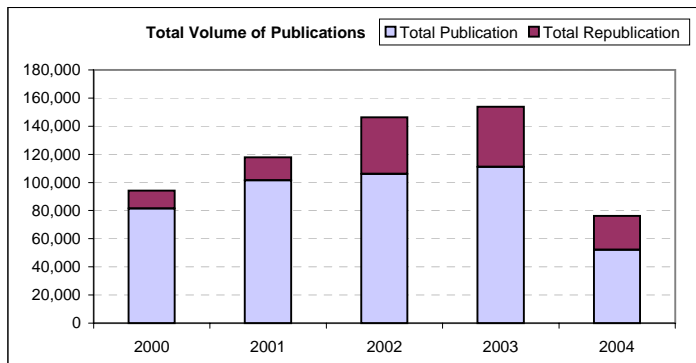
Republication	Year				
Pubcode	2000	2001	2002	2003	2004
R1	637	696	1,021	1,319	1,019
R2	5	4	10	10	7
R3	301	426	288	251	288
R4	8,178	10,557	31,289	35,080	18,845
R5	692	1,555	1,242	2,145	1,464
R6	2,548	2,061	5,165	3,057	1,857
R7	200	710	676	463	319
R8	14	309	662	388	194
R9	5	9	7	3	5
Grand Total	12,580	16,327	40,360	42,716	23,998



Republication Codes:

R1 - Late Publication of Article 19 Amendment
R2 - Supplementary ISR
R3 - Revised ISR
R4 - Late Publication of ISR
R5 - Correction of an Entry in Section I
R6 - Corrected Pamphlet
R7 - Corrected Version of a Pamphlet Front Page
R8 - Later Publication Of A Declaration Under Article 17(2)(A)
R9 - Revised Version of ISR Translation

	2000	2001	2002	2003	2004
Year					(ytd)
Total Publication	81,536	101,532	105,931	111,068	52,133
Total Reproduction	12,580	16,327	40,360	42,716	23,998
Total volume	94,116	117,859	146,291	153,784	76,131



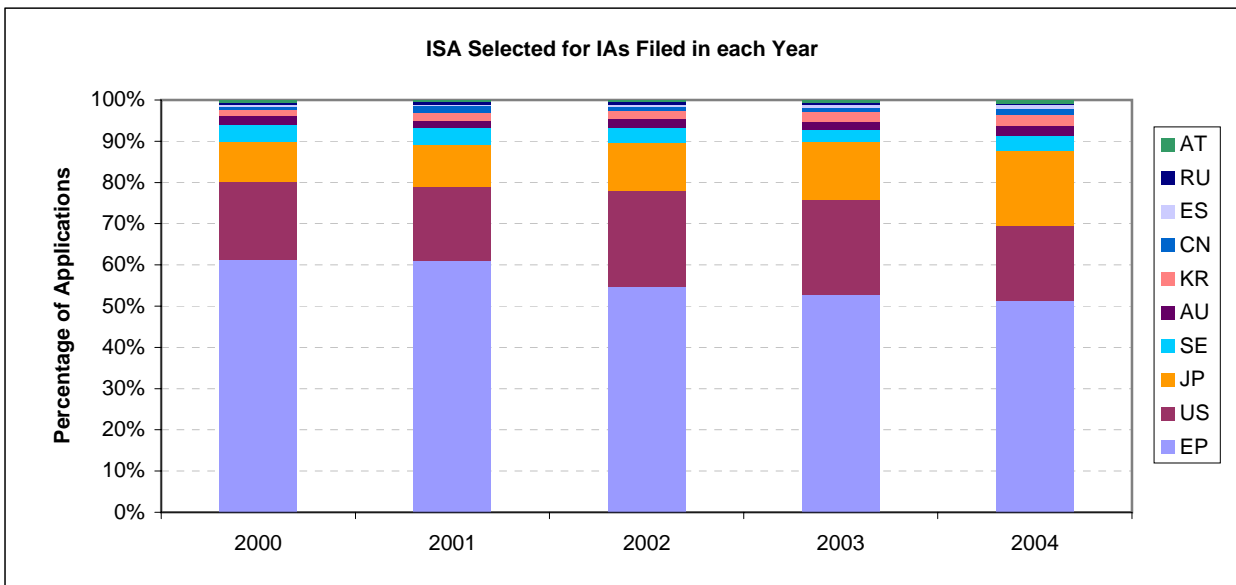
WIPO Statistics
International Search
Distribution of International Search Authorities
as at 20 July, 2004

Explanations and Definitions:

Time series is based on date of filing of the International Application.

Data for 2004 are provisional year to date figures.

Number of IAs	Year				
ISA	2000	2001	2002	2003	2004
EP	57,210	65,988	60,419	60,744	22,542
US	17,502	19,408	25,528	26,270	8,017
JP	8,961	11,091	13,161	16,143	8,096
SE	4,077	4,328	3,999	3,512	1,540
AU	1,890	2,064	2,208	2,249	1,096
KR	1,287	2,052	2,247	2,595	1,206
CN	770	1,678	977	1,224	613
ES	462	515	686	746	361
RU	557	615	625	632	215
AT	514	481	531	747	334



WIPO Statistics**Number of International Search Reports Established by Search Authority
as at 20 July, 2004*****Explanations and Definitions:***

Based on date of establishment of the Search Report.

Article 17(2)(a) declarations are included.

Data for 2004 are provisional year to date figures.

Number of IAs	Year				
ISA	2000	2001	2002	2003	2004
AT	684	535	549	534	305
AU	1,762	1,990	2,141	2,192	1,077
CN	364	1,464	1,002	1,160	546
EP	51,387	52,759	61,862	63,031	27,856
ES	390	475	597	683	371
JP	8,413	10,649	12,123	15,358	8,359
KR	778	1,755	2,122	2,321	1,287
RU	537	535	643	557	284
SE	4,278	4,105	4,164	3,689	1,528
US	16,102	17,635	18,835	22,223	9,003
Grand Total	84,695	91,902	104,038	111,748	50,616

WIPO Statistics
International Preliminary Examination
Chapter II Demand Trends
as at 20 July, 2004

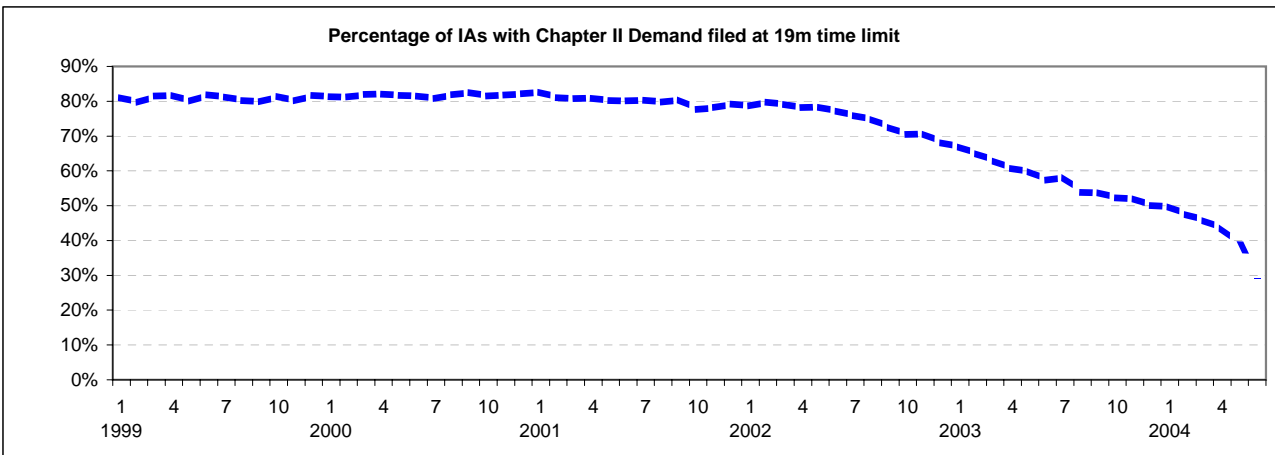
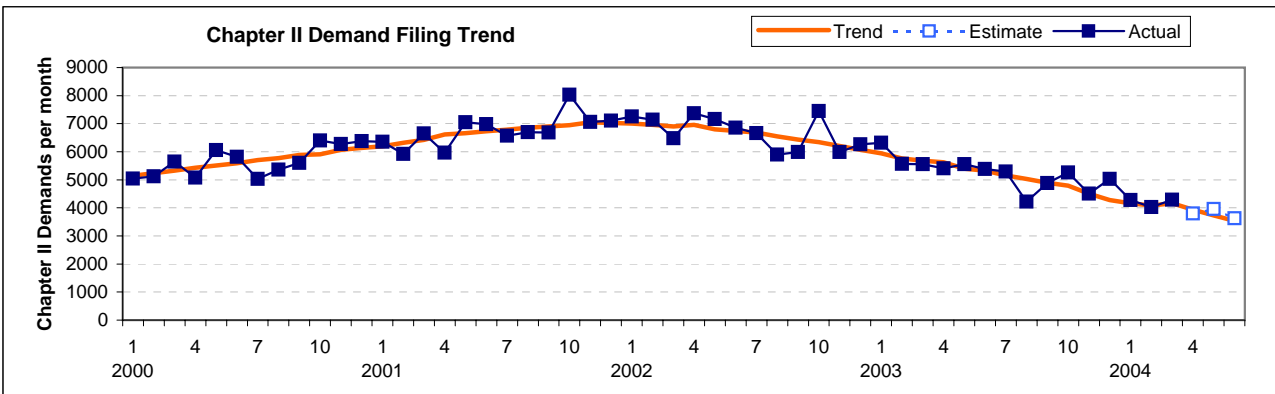
Chapter II Demand Trends

Explanations and Definitions:

The first graph shows the number of Chapter II demands filed in each month. The last four months are estimated because of processing time at the IPEA. This first graph shows absolute numbers of Chapter II demands. The second graph shows the trend as the percentage of international applications for which a Chapter II demand was filed by the PCT time limit. This second graph is an indicator of the percentage of applications using Chapter II.

Decline in Chapter II Usage:

The graphs show a strong decline in usage of Chapter II since the change of the Chapter I time limit in April 2002. The percentage of applications for which a Chapter II demand is filed has dropped from 80% to 40% and is still falling. The effect of January 2004 rule changes is expected to be a continued decline in Chapter II usage, but the full extent of the decline will not be clear until the end of 2004.

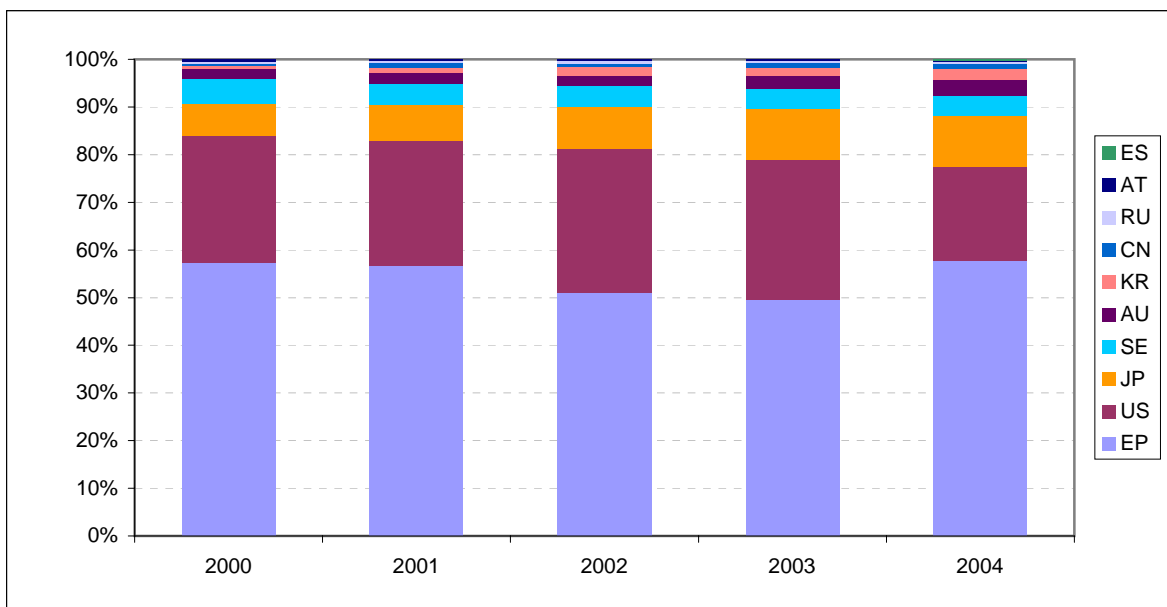


WIPO Statistics
International Preliminary Examination
Chapter II Demands by IPEA
as at 20 July, 2004

Explanations and Definitions:

Based on date of filing of the Chapter II Demand.
 Data for 2004 are provisional year to date figures.

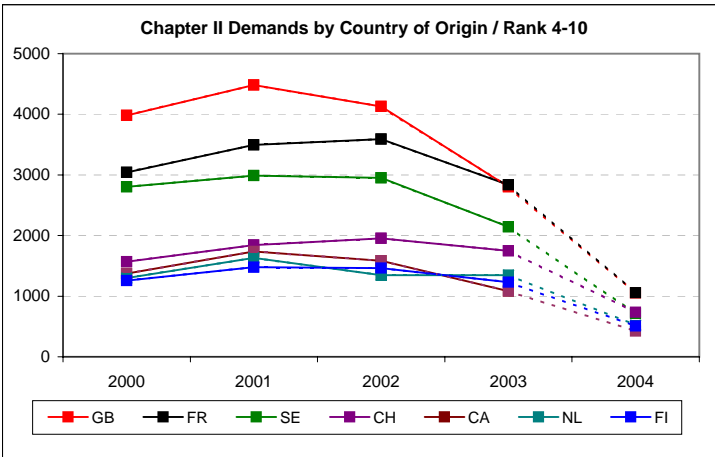
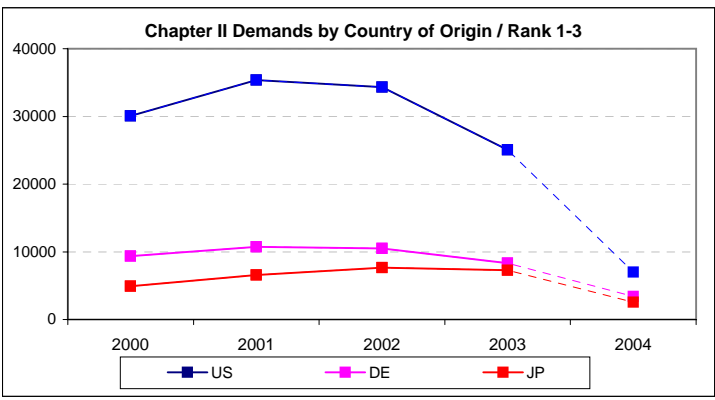
Number of Demands	Year				
	2000	2001	2002	2003	2004
IPEA					
EP	38,862	45,937	41,029	31,219	12,522
US	18,109	21,222	24,409	18,495	4,253
JP	4,608	6,139	7,077	6,767	2,362
SE	3,439	3,571	3,464	2,614	912
AU	1,473	1,839	1,855	1,690	740
KR	398	970	1,367	1,077	465
CN	266	779	675	667	250
RU	342	388	379	209	67
AT	315	210	256	238	55
ES	0	0	0	8	59
Grand Total	67,812	81,055	80,511	62,984	21,685



WIPO Statistics
International Preliminary Examination
Chapter II Demands by Country of Origin
as at 20 July, 2004

Explanations and Definitions:
 Based on date of filing of the Chapter II Demand
 Country of Origin is the residence indicated for the first named applicant.
 Codes "--" or "***" or blank are used when origin is unknown or unavailable.
 Data for 2004 are provisional year to date figures.

Origin	2000	2001	2002	2003	2004
--	0	0	1	2	4
**	135	164	167	122	53
AD	0	1	2	1	1
AE	0	8	4	4	1
AG	0	1	0	0	0
AL	0	0	5	0	0
AM	2	4	3	0	0
AN	0	1	0	0	0
AR	9	5	6	5	2
AT	346	463	438	363	179
AU	1,203	1,480	1,452	1,258	515
AZ	0	1	1	1	0
BA	0	1	2	3	0
BB	68	78	84	88	7
BD	0	0	1	0	0
BE	512	551	549	497	186
BG	21	21	9	6	6
BH	2	1	0	2	0
BI	0	0	2	0	0
BJ	0	0	0	1	0
BM	0	1	1	0	3
BR	76	106	106	99	40
BS	12	16	18	12	0
BW	0	2	0	1	0
BY	9	7	11	1	2
BZ	2	2	1	3	0
CA	1,371	1,738	1,582	1,085	423
CH	1,567	1,842	1,953	1,746	732
CK	1	2	0	8	0
CL	0	2	3	2	2
CM	0	1	0	0	0
CN	298	801	728	720	266
CO	4	1	13	5	4
CR	2	3	6	3	0
CU	7	2	14	12	9
CY	4	23	17	11	8
CZ	57	49	43	23	9
DE	9,384	10,750	10,502	8,316	3,418
DK	700	783	805	719	324
DM	0	0	1	0	0
DZ	0	0	1	1	1
EC	0	1	0	1	0
EE	3	5	15	2	1
EG	3	1	0	1	0
ES	215	333	305	288	131
FI	1,255	1,479	1,465	1,228	509
FR	3,042	3,495	3,589	2,836	1,057
GA	1	0	0	0	0
GB	3,981	4,481	4,128	2,801	1,053
GD	0	0	1	0	0
GE	5	2	2	2	0
GH	1	0	0	0	0
GN	0	0	1	0	0
GR	23	26	16	14	6
GT	0	0	1	0	0
HR	28	26	38	33	16
HT	0	1	0	0	0
HU	96	105	87	83	33
ID	2	8	2	7	2
IE	175	217	190	96	34
IL	702	951	866	461	142
IN	62	124	231	361	144
IR	0	1	0	1	0
IS	12	30	31	26	12
IT	912	1,123	1,111	952	383
JO	0	0	2	0	0
JP	4,937	6,563	7,668	7,271	2,546
KN	2	0	1	0	1



KP	0	0	0	1	1
KR	599	1,097	1,535	1,202	489
KW	0	0	1	1	0
KY	0	0	0	0	1
KZ	2	1	2	3	2
LB	1	1	0	1	0
LI	54	49	32	32	13
LT	0	1	2	1	0
LU	104	127	106	75	43
LV	4	3	7	5	1
MA	1	0	2	2	0
MC	8	12	8	10	3
MD	2	1	1	1	0
MK	4	4	1	0	0
MT	2	3	5	1	1
MU	0	5	0	5	1
MX	41	45	45	43	14
MY	2	10	9	16	8
NL	1,300	1,632	1,347	1,346	525
NO	433	513	478	413	170
NZ	209	242	266	217	98
PA	4	6	3	10	4
PE	2	0	0	0	0
PH	0	2	4	3	0
PL	35	68	42	44	20
PT	16	20	21	19	12
QA	1	0	0	0	0
RO	5	8	1	4	0
RU	308	346	340	195	64
SA	5	11	7	12	10
SC	0	1	0	0	0
SD	1	0	0	0	0
SE	2,805	2,988	2,953	2,145	715
SG	139	189	223	234	86
SI	31	32	29	26	14
SK	11	22	13	7	4
SM	3	1	1	0	0
SV	0	3	0	0	0
SY	0	0	1	0	0
SZ	0	0	0	1	0
TH	0	6	4	4	0
TN	0	3	1	2	1
TR	54	32	32	30	17
TT	0	0	1	1	0
TZ	0	0	0	1	0
UA	20	28	32	19	7
US	30,074	35,362	34,328	25,068	7,008
UY	0	2	6	5	5
UZ	2	0	0	0	1
VE	1	0	2	0	1
VG	0	0	2	0	0
VU	3	0	1	0	3
YU	6	13	7	5	2
ZA	270	278	297	187	76
ZM	0	0	1	0	0
ZW	1	0	3	1	0

WIPO Statistics
Appendix - List of Codes

AE	United Arab Emirates	GD	Grenada	NA	Namibia
AG	Antigua and Barbuda	GE	Georgia	NI	Nicaragua
AL	Albania	GH	Ghana	NL	Netherlands
AM	Armenia	GM	Gambia	NO	Norway
AP ¹	ARIPO	GR	Greece	NZ	New Zealand
AT	Austria	HR	Croatia	OA ⁴	OAPI
AU	Australia	HU	Hungary	OM	Oman
AZ	Azerbaijan	IB	International Bureau	PG	Papua New Guinea
BA	Bosnia and Herzegovina	ID	Indonesia	PH	Philippines
BB	Barbados	IE	Ireland	PL	Poland
BE	Belgium	IL	Israel	PT	Portugal
BG	Bulgaria	IN	India	RO	Romania
BR	Brazil	IS	Iceland	RU	Russian Federation
BW	Botswana	IT	Italy	SC	Seychelles
BY	Belarus	JP	Japan	SD	Sudan
BZ	Belize	KE	Kenya	SE	Sweden
CA	Canada	KG	Kyrgyzstan	SG	Singapore
CH	Switzerland	KP	Democratic People's Rep. of Korea	SI	Slovenia
CN	China	KR	Republic of Korea	SK	Slovakia
CO	Colombia	KZ	Kazakhstan	SL	Sierra Leone
CR	Costa Rica	LC	Saint Lucia	SY	Syrian Arab Republic
CU	Cuba	LI	Liechtenstein	SZ	Swaziland
CY	Cyprus	LK	Sri Lanka	TJ	Tajikistan
CZ	Czech Republic	LR	Liberia	TM	Turkmenistan
DE	Germany	LS	Lesotho	TN	Tunisia
DK	Denmark	LT	Lithuania	TR	Turkey
DM	Dominica	LU	Luxembourg	TT	Trinidad and Tobago
DZ	Algeria	LV	Latvia	TZ	United Republic of Tanzania
EA ²	Eurasian Patent Organisation	MA	Morocco	UA	Ukraine
EC	Ecuador	MC	Monaco	UG	Uganda
EE	Estonia	MD	Republic of Moldova	US	United States of America
EP ³	European Patent Office	MG	Madagascar	UZ	Uzbekistan
EG	Egypt	MK	The former Yugoslav Rep. of Macedonia	VC	Saint Vincent and the Grenadines
ES	Spain	MN	Mongolia	VN	Viet Nam
FI	Finland	MW	Malawi	YU	Serbia and Montenegro
FR	France	MX	Mexico	ZA	South Africa
GB	United Kingdom	MZ	Mozambique	ZM	Zambia
				ZW	Zimbabwe

¹ AP: (Botswana, Ghana, Gambia, Kenya, Lesotho, Malawi, Mozambique, Sudan, Sierra Leone, Swaziland, United Republic of Tanzania, Uganda, Zambia, Zimbabwe)

² EA: (Armenia, Azerbaijan, Belarus, Kyrgyzstan, Kazakhstan, Republic of Moldova, Russian Federation, Tajikistan, Turkmenistan)

³ EP: (Austria, Belgium, Bulgaria, Switzerland and Liechtenstein, Cyprus, Czech Republic, Germany, Denmark, Estonia, Spain, Finland, France, United Kingdom, Greece, Hungary, Ireland, Italy, Luxembourg, Monaco, Netherlands, Portugal, Romania, Sweden, Slovenia, Slovakia, Turkey)

⁴ OA: (Benin, Burkina Faso, Cameroon, Central African Republic, Chad, Congo, Côte d'Ivoire, Equatorial Guinea, Gabon, Guinea, Guinea-Bissau, Mali, Mauritania, Niger, Senegal, Togo)